

Interior Header Schedule @ Fire Rated Walls (1-Hour)

Use at walls with (1) layer 5/8" drywall [full height] (each side) - 24"o/c Maximum Stud Spacing
1-Hour Design Load Package, Deflection L/240

INTERIOR METAL STUD WALLS			HEADER SCHEDULE				
OPENING TYPE (With Head @ 7'-0" or Greater)	Deck Height (or less)	Wall Width Stud Size	ALLOWABLE SPAN	ALLOWABLE SPAN	ALLOWABLE SPAN	ALLOWABLE SPAN	ALLOWABLE SPAN
			----- ProX HEADER Selection	----- ProX HEADER Selection	----- ProX HEADER Selection	----- ProX HEADER Selection	----- ProX HEADER Selection
>>> INTERIOR OPENING SPAN >>>			UP to 4'- 6"	4'-7" to 6'- 6"	6'-7" to 8'- 6"	8'-7" to 10'- 6"	10'-7" to 12'- 0"
Typ. Interior Door (or) Window HEAD	0'-0" TO 14'-0"	3-5/8" Studs = 362 4" Studs = 400 6" Studs = 600	362X425-33 400X425-33 600X425-33	362X425-43 400X425-43 600X425-43	362X425-54 400X425-54 600X425-54	362X425-68 400X425-68 600X425-68	362XTC425-68 400XTC425-54 600X425-68
Typ. Interior Door (or) Window HEAD	14'-1" TO 16'-0"	3-5/8" Studs = 362 4" Studs = 400 6" Studs = 600	362X425-33 400X425-33 600X425-33	362X425-54 400X425-54 600X425-43	362X425-68 400X425-68 600X425-54	362XTC425-54 400XTC425-54 600X425-68	362XTC425-68 400XTC425-54 600XTC425-54
Typ. Interior Door (or) Window HEAD	16'-1" TO 18'-0"	3-5/8" Studs = 362 4" Studs = 400 6" Studs = 600	362X425-43 400X425-33 600X425-33	362X425-54 400X425-54 600X425-54	362X425-68 400X425-68 600X425-68	362XTC425-68 400XTC425-54 600XTC425-54	N/A N/A 600XTC425-68
Typ. Interior Door (or) Window HEAD	18'-1" TO 20'-0"	3-5/8" Studs = 362 4" Studs = 400 6" Studs = 600	362X425-43 400X425-43 600X425-33	362X425-54 400X425-54 600X425-54	362XTC425-54 400X425-68 600X425-68	362XTC425-68 400XTC425-68 600XTC425-54	N/A N/A 600XTC425-68

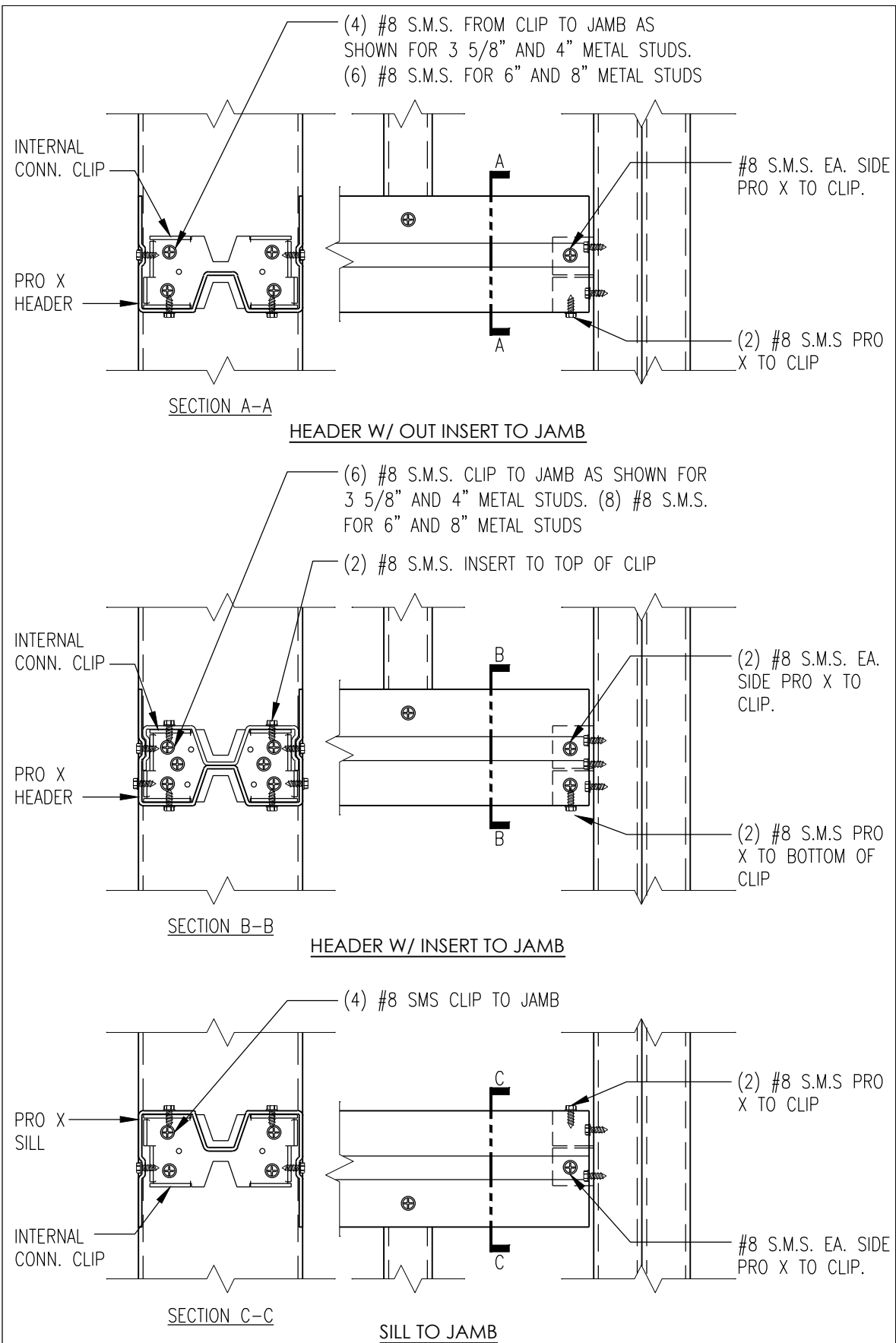
Interior Header Schedule @ Fire Rated Walls (2-Hour)

Use at walls with (2) layer 5/8" drywall [full height] (each side) - 24"o/c Maximum Stud Spacing
2-Hour Design Load Package, Deflection L/240

INTERIOR METAL STUD WALLS			HEADER SCHEDULE				
OPENING TYPE (With Head @ 7'-0" or Greater)	Deck Height (or less)	Wall Width Stud Size	ALLOWABLE SPAN	ALLOWABLE SPAN	ALLOWABLE SPAN	ALLOWABLE SPAN	ALLOWABLE SPAN
			----- ProX HEADER Selection	----- ProX HEADER Selection	----- ProX HEADER Selection	----- ProX HEADER Selection	----- ProX HEADER Selection
>>> INTERIOR OPENING SPAN >>>			UP to 4'- 6"	4'-7" to 6'- 6"	6'-7" to 8'- 6"	8'-7" to 10'- 6"	10'-7" to 12'- 0"
Typ. Interior Door (or) Window HEAD	0'-0" TO 14'-0"	3-5/8" Studs = 362 4" Studs = 400 6" Studs = 600	362X425-43 400X425-43 600X425-33	362X425-54 400X425-54 600X425-54	362X425-68 400X425-68 600X425-68	362XTC425-68 400XTC425-68 600XTC425-54	N/A N/A 600XTC425-68
Typ. Interior Door (or) Window HEAD	14'-1" TO 16'-0"	3-5/8" Studs = 362 4" Studs = 400 6" Studs = 600	362X425-43 400X425-43 600X425-43	362X425-68 400X425-54 600X425-54	362XTC425-54 400XTC425-54 600X425-68	N/A N/A 600XTC425-68	N/A N/A N/A
Typ. Interior Door (or) Window HEAD	16'-1" TO 18'-0"	3-5/8" Studs = 362 4" Studs = 400 6" Studs = 600	362X425-54 400X425-54 600X425-43	362X425-68 400X425-68 600X425-68	362XTC425-68 400XTC425-68 600XTC425-54	N/A N/A N/A	N/A N/A N/A
Typ. Interior Door (or) Window HEAD	18'-1" TO 20'-0"	3-5/8" Studs = 362 4" Studs = 400 6" Studs = 600	362X425-54 400X425-54 600X425-54	362X425-68 400X425-68 600X425-68	N/A 400XTC425-68 600XTC425-54	N/A N/A N/A	N/A N/A N/A

NOTES:

- 1.) Manufactured by Dietrich Metal Framing SSMA ICC (ICBO) ER-4349P ASTM Material Standards and Design Thicknesses.
- 2.) For additional information, design loads, wall heights, spans, connection notes and details visit www.proxheader.com.
- 3.) All screws are #8 Self-Tapping Waferhead Screws (Interior). Use # 10 Self-Tapping Waferhead Screws (min. 3/4" long) at all 14 gauge applications. #8 screws may be upgraded to #10 screws at installer's option.
- 4.) All Clips are 54 mil. / 16 gauge / All Fasteners / Screws can be installed in either direction (i.e. Clip to Jamb or Jamb to Clip).
- 5.) Headers of thicker gauge in place of those specified in the above schedule are structurally acceptable.
- 6.) Listed headers may be utilized for spans less than the maximum [allowable] spans & heights specified in the above schedule.



HEADER/ SILL SCHEDULE FOR WALLS (NON-RATED AND 1 HOUR)					
I= 1.0 L/240 LATERAL LOAD MIN.5PSF PER ICB 1607.13					
STUD SIZE MODEL TYPE	ALLOWABLE SPAN MODEL	ALLOWABLE SPAN MODEL	ALLOWABLE SPAN MODEL	ALLOWABLE SPAN MODEL	ALLOWABLE SPAN MODEL
	UP TO 4'-6"	4'-7" TO 6'-6"	6'-7" TO 8'-6"	8'-7" TO 10'-6"	10'-7" TO 12'-0"
3-5/8" = 362	362X425-33	362X425-54	362X425-68	362XTC425-54	362XTC425-68
4" = 400	400X425-33	400X425-54	400X425-68	400XTC425-54	400XTC425-68
6" = 600	600X425-33	600X425-43	600X425-54	600X425-68	600XTC425-54
8" = 800	800X425-33	800X425-43	800X425-54	800X425-68	800XTC425-54
HEADER/ SILL SCHEDULE FOR WALLS (2-HOUR)					
I= 1.0 L/240 LATERAL LOAD MIN.5PSF PER ICB 1607.13					
STUD SIZE MODEL TYPE	ALLOWABLE SPAN MODEL	ALLOWABLE SPAN MODEL	ALLOWABLE SPAN MODEL	ALLOWABLE SPAN MODEL	ALLOWABLE SPAN MODEL
	UP TO 4'-6"	4'-7" TO 6'-6"	6'-7" TO 8'-6"	8'-7" TO 10'-6"	10'-7" TO 12'-0"
3-5/8" = 362	362X425-43	362X425-68	362XTC425-54	N/A	N/A
4" = 400	400X425-43	400X425-54	400XTC425-54	N/A	N/A
6" = 600	600X425-43	600X425-54	600X425-68	600XTC425-68	N/A
8" = 800	800X425-43	800X425-54	800X425-68	800XTC425-54	N/A

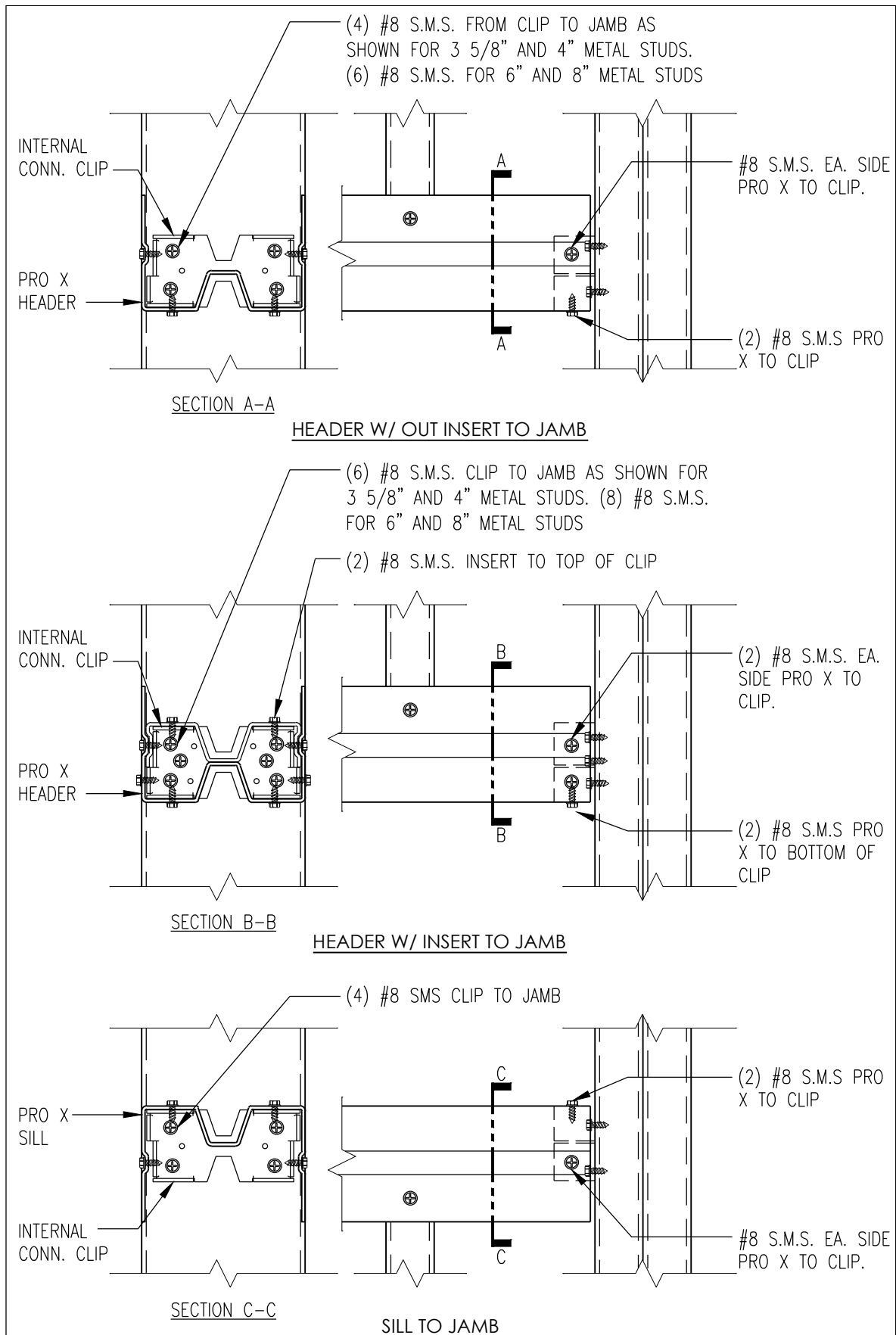
NOTES:

- MAX WALL HEIGHT FOR THIS SYSTEM IS 16'-0".
- HEADER HEIGHTS TO BE 7'-2" OR GREATER.
- FOR SILL APPLICATIONS USE 33 MIL. FOR SPANS LESS THAN 8.5 FEET, FOR SPANS GREATER USE 54 MIL.
- FOR WINDOWS AND OVERHEAD HVAC OPENING USE SAME MEMBER SELECTION AS DOOR SCHEDULE.
- CONFORMS TO ICC ESR-1765.
- PRO-X HEADER SYSTEM BY BRADY CONSTRUCTION INNOVATIONS, INC.

092216HO004B.dwg

Scale: 3"=1'-0"

HEADER/SILL FRAMING



HEADER/ SILL SCHEDULE FOR WALLS (NON-RATED AND 1 HOUR)					
I = 1.5 L/240 LATERAL LOAD MIN.5PSF PER ICB 1607.13					
STUD SIZE MODEL TYPE	ALLOWABLE SPAN MODEL	ALLOWABLE SPAN MODEL	ALLOWABLE SPAN MODEL	ALLOWABLE SPAN MODEL	ALLOWABLE SPAN MODEL
	UP TO 4'-6"	4'-7" TO 6'-6"	6'-7" TO 8'-6"	8'-7" TO 10'-6"	10'-7" TO 12'-0"
3-5/8" = 362	362X425-33	362X425-54	362X425-68	362XTC425-54	362XTC425-68
4" = 400	400X425-33	400X425-54	400X425-68	400XTC425-54	400XTC425-68
6" = 600	600X425-33	600X425-43	600X425-54	600X425-68	600XTC425-54
8" = 800	800X425-33	800X425-43	800X425-54	800X425-68	800XTC425-54
HEADER/ SILL SCHEDULE FOR WALLS (2-HOUR)					
I = 1.5 SDS=1.250 L/240 LATERAL LOAD 7.5PSF					
STUD SIZE MODEL TYPE	ALLOWABLE SPAN MODEL	ALLOWABLE SPAN MODEL	ALLOWABLE SPAN MODEL	ALLOWABLE SPAN MODEL	ALLOWABLE SPAN MODEL
	UP TO 4'-6"	4'-7" TO 6'-6"	6'-7" TO 8'-6"	8'-7" TO 10'-6"	10'-7" TO 12'-0"
3-5/8" = 362	362X425-43	362X425-68	362XTC425-68	N/A	N/A
4" = 400	400X425-43	400X425-68	400XTC425-54	N/A	N/A
6" = 600	600X425-43	600X425-54	600XTC425-54	600XTC425-68	N/A
8" = 800	800X425-43	800X425-54	800X425-68	800XTC425-54	N/A

- NOTES:
- MAX WALL HEIGHT FOR THIS SYSTEM IS 16'-0".
 - HEADER HEIGHTS TO BE 7'-2" OR GREATER.
 - FOR SILL APPLICATIONS USE 33 MIL. FOR SPANS LESS THAN 8.5 FEET, FOR SPANS GREATER USE 54 MIL.
 - FOR WINDOWS AND OVERHEAD HVAC OPENING USE SAME MEMBER SELECTION AS DOOR SCHEDULE.
 - CONFORMS TO ICC ESR-1765.
 - PRO-X HEADER SYSTEM BY BRADY CONSTRUCTION INNOVATIONS, INC.

092216HO004A.dwg

Scale: 3"=1'-0"

HEADER/SILL FRAMING

